

# PLS AR-200 PLS2010

## Ceiling hoist



The AR-200 is a high-quality, versatile ceiling hoist that allows for safe and respectful transfers. The ceiling hoist is characterized by exceptionally low noise levels, both during lifting and during movement on the rail. The lift's high load capacity, combined with numerous advanced mounting options and a long-lasting battery, allows it to be used not only for transfers but also for physiotherapy.

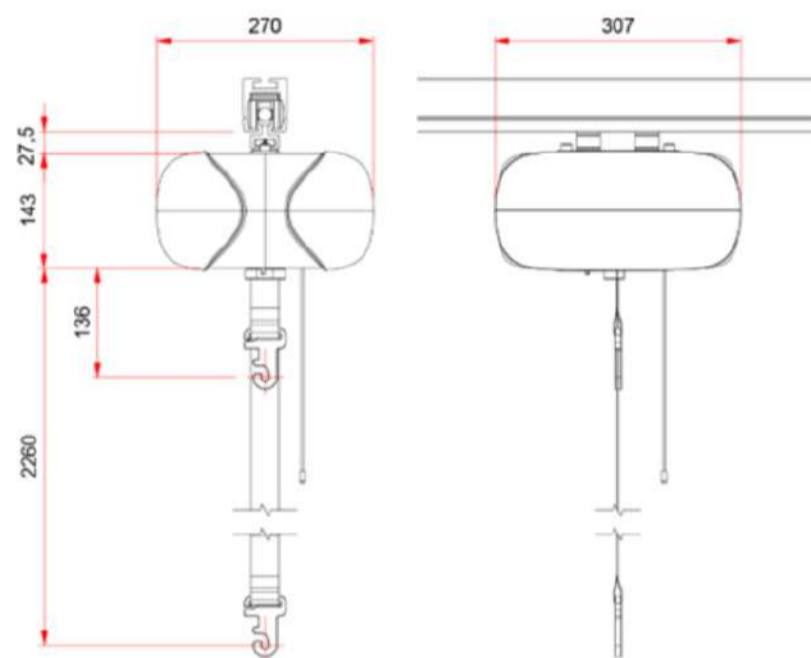


### The main advantages:

- Advanced battery protection system,
- Automatic standby mode when not in use for a certain period of time,
- Zero power consumption in standby mode,
- Slow start and stop function for comfortable lifting,
- Option to use an electric spreader bar,
- Charging via a magnetic wall charger or through a rail,
- Dual control trolley for easy and smooth movement on the PLS rail,
- Emergency stop function.



PLS hoists are charged via a remote control in a magnetic charging station mounted on the wall.



### Technical parameters

Lifting capacity	200 kg
Weight	10 kg
Dimensions	307 x 270 x 143 mm
Carrying strap dimensions (total/usable)	35 x 2400/ 2260 mm
Lifting speed (loaded/unloaded)	32 mm/s / 43 mm/s
Falling speed (loaded/unloaded)	47 mm/s / 42 mm/s
Max. number of lifts per charge with a load of 75/200 kg	75 / 45
Power supply	Battery, 24 V 2,9 Ah
Battery	(2x) 12 V – 2,9 Ah
Charging time	8 hours
Installation options	Single track, traverse, portable hoist
Noise level	47≤54 dB
Hoist tightness class	IP 32
Hand control tightness class	IP 67
Spreader bar attachment point	Quick connector with hanger lock and screw d=10mm
Emergency Stop/Emergency Lowering	Yes/Yes, with a 60 cm rope
Moving along the track	Manual
Battery charge indicator	LED diode
Auto-off lift/battery indicator	Yes, 15/ 2 min
Battery protection system	Yes
End protection	Yes



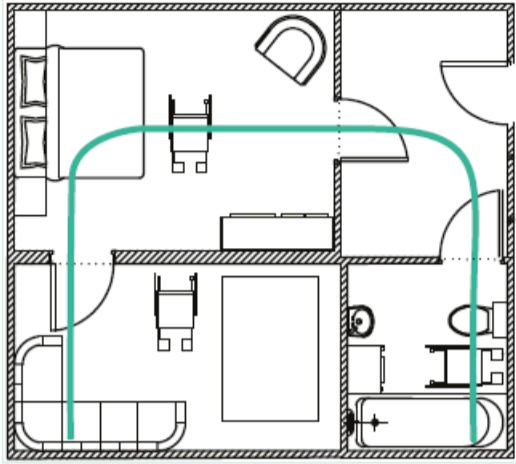
### Additional technical parameters

Hand control	Wired or wireless
Average braking distance at the center of the suspension	37 mm
Material (construction) and maintenance	Steel (S235JR, S355JR), C45 (electro-galvanized), Aluminum (powder-coated)
Cover	MABS with UL-94 HB flammability (higher available)
Length of the alarm cord	60 cm (with regulation)
Basic UDI-DI	87201657932010TQ
In compliance with Regulation (EU) 2017/745 and standards	See Declaration of Conformity

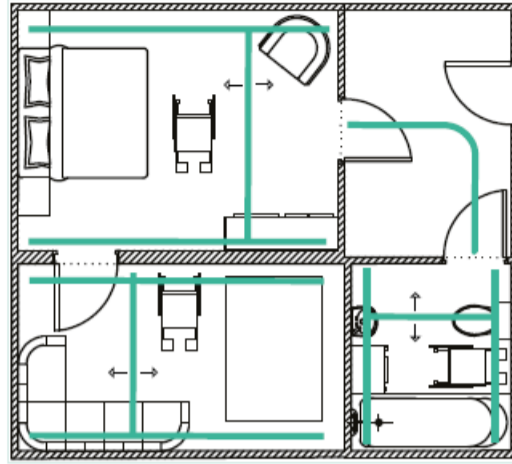
### Safety features

Battery monitor	Prevents fully discharging of the Batteries.
Height End Switch	Ensures that the Spreader Bar does not move higher than the maximum lifting height.
Emergency stop	Turns off the Ceiling Hoist in emergency situations when the red cord is pulled.
Emergency lowering feature	Lowers the patient when the Emergency Cord is pulled down.
Lifting Tape tension switch	Prevents the Lifting Tape in the Ceiling Hoist from piling up when lowered without load.
Lifting Tape limit switch	Turns off the motor of the Ceiling Hoist at the end of the Lifting Tape.

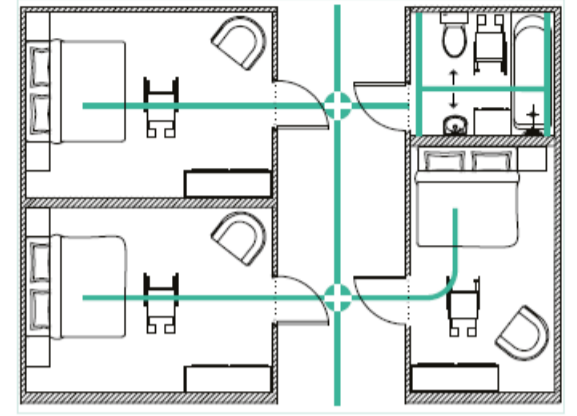
# Types of ceiling system installations



Single track



Traverse system



Turntable and Coupling



## Solutions for the rail system



Coupling  
55721



Turntable  
91884



Track switch  
PLS1003 Track-Switch (Left)  
PLS1004 Track-Switch (Right)

## Compatible accessories



PLS 2-Point  
Spreader Bar  
PLS8102



PLS 4-Point  
Spreader Bar  
PLS8103 - to 500 kg



PLS Electric  
Spreader Bar  
PLS8105 - to 250 kg  
PLS8107 - to 350 kg



LeviActive spreader bar  
O-CZ-LA



PLS scale  
PLS8106